

CAT® G.E.T. FOR SSLs & CTLs

SCAN TO
SHOP NOW
»



Ohio



CAT GROUND ENGAGING TOOLS (G.E.T.)

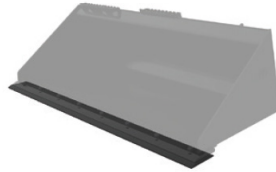
25% OFF*

UP TO 20% INCREASE IN PERFORMANCE

Cat® G.E.T. deliver stronger penetration, cleaner cutting, and longer wear life, even in high-cycle, high-abrasion work. Cat G.E.T. helps these your Compact Track Loaders & Skid Steer Loaders dig, grade, and load more efficiently while protecting the bucket from premature wear.

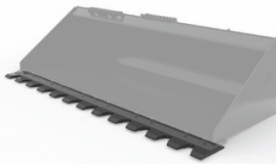
DEPENDABLE PROTECTION

With durable tips, edges, and adapters built specifically for compact equipment, operators get better performance, reduced downtime, and lower operating costs. Simply put, Cat G.E.T. keeps their compact machines productive and profitable across every jobsite.



BUCKET CUTTING EDGES* – STEEL

| Part Number | Bucket Width – mm (in) | Required Sets of Hardware |
|-------------|------------------------|---------------------------|
| 135-9394 | 1576 (62) | 8 |
| 135-9395 | 1730 (68) | 8 |
| 135-9396 | 1883 (74) | 11 |
| 135-9397 | 2036 (80) | 11 |
| 195-5124 | 2188 (86) | 11 |
| 538-2280 | 2340 (92) | 9 |
| 296-7602 | 2490 (98) | 13 |
| 469-4306 | 2642 (104) | 13 |



BUCKET SERRATED EDGES*

| Part Number | Bucket Width – mm (in) | Required Sets of Hardware |
|-------------|------------------------|---------------------------|
| 319-9599 | 1576 (62) | 8 |
| 319-9600 | 1760 (68) | 8 |
| 319-9601 | 1883 (74) | 11 |
| 319-9602 | 2036 (80) | 11 |
| 319-9603 | 2188 (86) | 7 |
| 540-3531 | 2340 (92) | 9 |
| 491-5963 | 2490 (98) | 13 |
| 491-5964 | 2642 (104) | 13 |

SERRATED EDGE HARDWARE—ONE SET* (REQUIRED)

| Part Number | Description | Quantity |
|-------------|-----------------------|----------|
| 8T-4778 | Nut (1x) | 1 |
| 159-2953 | Screw, Flat Head (1x) | 1 |



BUCKET TOOTH BAR MOUNTING HARDWARE*** (REQUIRED)

| Part Number | Description | Quantity |
|-------------|-------------|----------|
| 2J-3507 | Nut | 2 |
| 3B-4516 | Lock washer | 2 |
| 5P-8250 | Washer | 2 |
| 8S-9093 | Bolt | 2 |



BUCKET TOOTH BARS – FOR USE WITH BASE EDGE*

| Part Number | Bucket Width – mm (in) | Quantity of Uni Teeth |
|-------------|------------------------|-----------------------|
| 136-8734 | 1576 (62) | 7 |
| 136-8735 | 1760 (68) | 8 |
| 136-8736 | 1883 (74) | 8 |
| 217-4878 | 2036 (80) | 8 |
| 275-5427 | 2188 (86) | 8 |
| 566-2844 | 2340 (92) | 8 |

BUCKET TOOTH BARS – FOR USE WITH CUTTING EDGE**

| Part Number | Bucket Width – mm (in) | Quantity of Uni Teeth |
|-------------|------------------------|-----------------------|
| 159-0330 | 1576 (62) | 7 |
| 159-0340 | 1760 (68) | 8 |
| 159-0350 | 1883 (74) | 8 |
| 195-9160 | 2036 (80) | 8 |
| 264-2084 | 2188 (86) | 8 |
| 566-1841 | 2340 (92) | 8 |

*Offer valid April 1, 2026 through June 30, 2026. When purchasing online, must use promo code: BRKGROUND at checkout to receive discount – promo code valid on parts.cat.com/ohio only. Cannot be combined with any other discount, programs, offers, or incentives. Subject to change without notice. Contact your Ohio Cat sales rep or local Ohio Cat Parts Store for final pricing and availability.

© 2026 Caterpillar. All Rights Reserved. CAT, CATERPILLAR, LET'S DO THE WORK, their respective logos, "Caterpillar Yellow", the "Power Edge" and Cat "Modern Hex" trade dress as well as corporate and product identity used herein, are trademarks of Caterpillar and may not be used without permission.

Ohio CAT

OHIOCAT.COM/CAT-GET-SALE