

RAPID, RELIABLE, READY

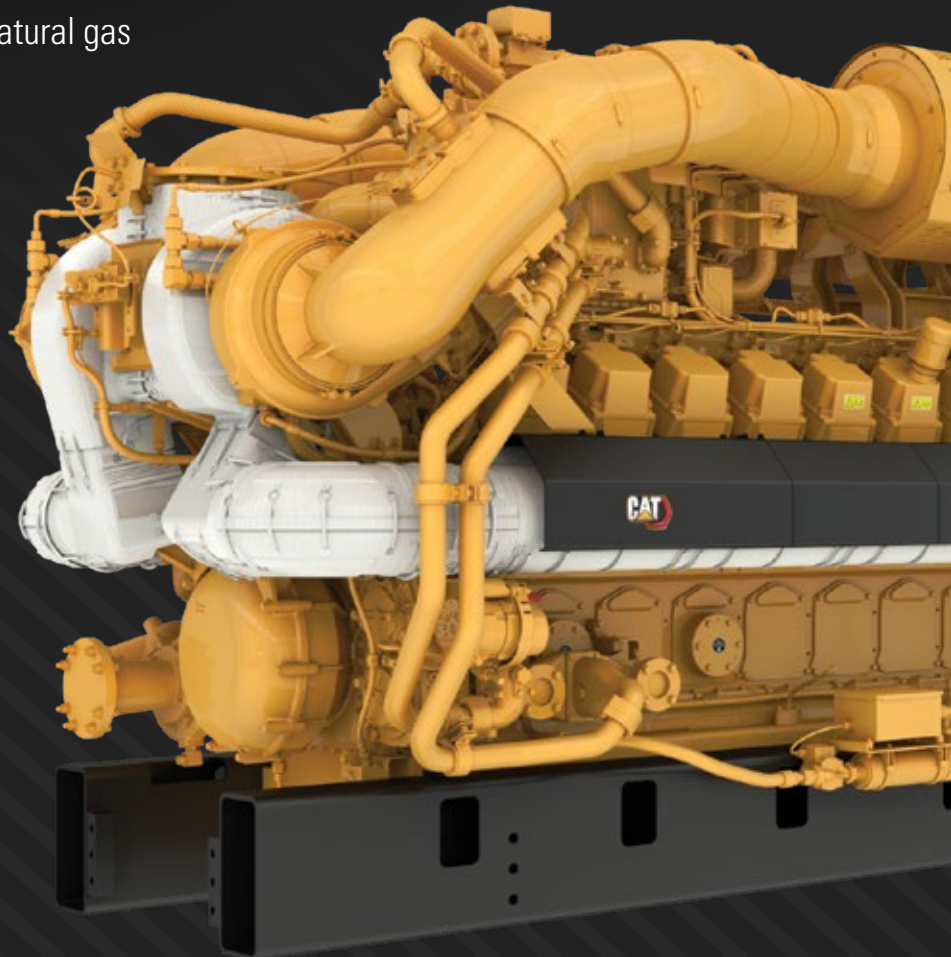


# INTRODUCING THE NEW G3520 3.1 MW **FAST RESPONSE** GAS GENERATOR SET

The 3.1 MW Cat® G3520 Fast Response natural gas generator set is the latest addition to our portfolio of natural-gas power solutions with fast-response capabilities, for supporting standby and demand response applications.

**This is our largest single-unit output with this capability.**

It's engineered for critical applications such as healthcare institutions, data centers, emergency service centers and utilities, where the need for uninterrupted power is essential.



# BUILT TO SUCCEED:

## MINIMIZING DOWNTIME AND ENSURING POWER AVAILABILITY



Rapid Deployment: The Cat G3520 Fast Response generator set can start and accept load from a **cold start in under 10 seconds**, ensuring minimal downtime and aligning with NFPA 110 requirements.

**3100**  
ekW

Industry Leading  
Power Density  
at 3100 ekW

**20%**  
**MORE**

20% more power  
in the same sized  
package



Large Loads Steps with **Diesel-like performance**

LEXE23567-00

© 2025 Caterpillar. All Rights Reserved. Cat, Caterpillar, LET'S DO THE WORK, their respective logos, "Caterpillar Corporate Yellow", the "Power Edge" and Cat "Modern Hex" trade dress as well as corporate and product identity used herein, are trademarks of Caterpillar and may not be used without permission.



## DELIVERING FINANCIAL BENEFITS THROUGH DEMAND RESPONSE

- Revenue Generation: Participate in utility-sponsored demand and emergency response programs to create new revenue streams.
- Optimized Integration with Caterpillar's Distributed Energy Resource Management System (DERMS), Cat AMP, facilitates automatic enrolment and real-time verification, maximizing program benefits.

## ADDITIONAL FEATURES

- It comes with the **CAT® Energy Control System** – a cost competitive, scalable, generator set control system
- Certified by the U.S. Environmental Protection Agency (EPA) for emergency and non-emergency applications
- Available in both 50 and 60 Hz, making it suitable for global deployment

